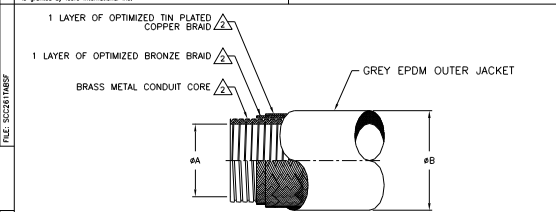


**DISCLAIMER:** The data described and illustrated in this document, except those items which are vendor parts, has been developed by, and is the property of, Icore International Inc. Disclosure, use, reproduction or manufacture of its contents, or any part, feature, design, function, or process shall not be made unless written consent therein is granted by Icore International Inc.

**DISCLAIMER:** All dimensions represented on this drawing should be confirmed prior to inclusion within designs or specifications. Icore International Inc. is constantly incorporating product improvements, and therefore reserves the right to make changes without notice.



VIEW 51

FILE: SDC261TAB2P

REV. DATE: 09/15/04

COMPOSITE CONDUIT						
NOMINAL CONDUIT I.D.	ENTRACO CONDUIT SIZE CODE IN 1/32" INCREMENTS	ØA ID MIN	ØB OD MAX	ENTRACO COMPOSITE CONDUIT PART NUMBER	MIN INSIDE BEND RADIUS	MAX LENGTH IN FEET
1/2"	16	.485	.867	CC261-16	2,250	25-30
3/4"	24	.735	1.100	CC261-24	2,500	25-30
1"	32	.985	1.450	CC261-32	3,750	25-30
1 1/4"	40	1.235	1.677	CC261-40	4,750	10-15
1 1/2"	48	1.485	1.960	CC261-48	5,500	10-15

TABLE 1

CC261-##

EMP CONDUIT (REFER TO FIGURE 1)

CONDUIT SIZE IN 1/32" INCREMENTS (REFER TO TABLE 1) (THIS IS ALSO THE NUMBER USED FOR TERMINATION SIZES ON ALL ADAPTER DRAWINGS)

PART NUMBER DESCRIPTION

NOTES: UNLESS OTHERWISE SPECIFIED

▲ MAXIMUM CONTINUOUS LENGTHS AVAILABLE. LONGER LENGTHS WILL CONTAIN SPLICES.

▲ BRAID SYSTEM IS QUALIFIED TO NAVSEA PCI TESTING.

ENTRACO Sea-FROST™ System

Sea-FROST™ EMP CONDUIT

ENTRACO An Icore International Inc. 3780 Flightline Drive Santa Rosa, CA 95403-8227

CODE IDENT: SALES 05593 S DRAWING NUMBER: CC261-TAB