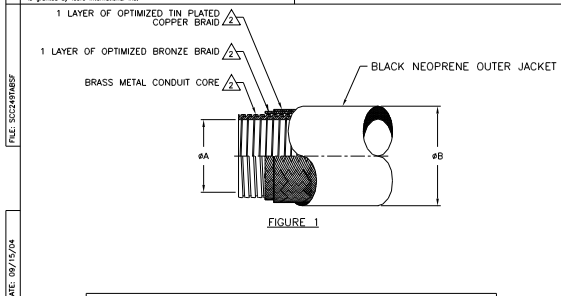


DISCLAIMER: The data described and illustrated in this document, except those items which are vendor parts, has been developed by, and is the property of, Icore International Inc. Disclosure, use, reproduction or manufacture of its contents, or any part, feature, design, function, or process shall not be made unless written consent therefor is granted by Icore International Inc.

DISCLAIMER: All dimensions represented on this drawing should be confirmed prior to inclusion within designs or specifications. Icore International Inc. is constantly incorporating product improvements, and therefore reserves the right to make changes without notice.



COMPOSITE CONDUIT

NOMINAL CONDUIT I.D.	ENTRACO CONDUIT SIZE CODE IN 1/32" INCREMENTS	#A I.D. MIN	#B O.D. MAX	ENTRACO COMPOSITE CONDUIT PART NUMBER	MIN INSIDE BEND RADIUS	MAX LENGTH IN FEET
1/2"	16	.485	.867	CC249-16	2.250	25-30
3/4"	24	.735	1.100	CC249-24	2.500	25-30
1"	32	.985	1.450	CC249-32	3.750	25-30
1 1/4"	40	1.235	1.677	CC249-40	4.750	10-15
1 1/2"	48	1.485	1.960	CC249-48	5.500	10-15

TABLE 1

CC249-##

EMP CONDUIT (REFER TO FIGURE 1)

CONDUIT SIZE IN 1/32" INCREMENTS (REFER TO TABLE 1)
(THIS IS ALSO THE NUMBER USED FOR TERMINATION SIZES ON ALL ADAPTER DRAWINGS)

PART NUMBER DESCRIPTION

NOTES: UNLESS OTHERWISE SPECIFIED

▲ MAXIMUM CONTINUOUS LENGTHS AVAILABLE, LONGER LENGTHS WILL CONTAIN SPLICES.

▲ BRAID SYSTEM IS QUALIFIED TO NAVSEA PCI TESTING.

ENTRACO Sea-FROST™ System

Sea-FROST™ EMP CONDUIT

ENTRACO An Icore Product Line Icore International Inc. 3780 Flightline Drive Santa Rosa, CA 95403-8227	CODE IDENT:	SALES	DRAWING NUMBER:
	05593	S	CC249-TAB

VIEW: S1
 FILE: SDC249TAB.DWG
 REV: DATE: 09/15/04
 ECO: #884 / ESR #1082
 07/24/97 REV: D
 07/17/97 APPROVED BY: SDS
 DWG: 07/17/97