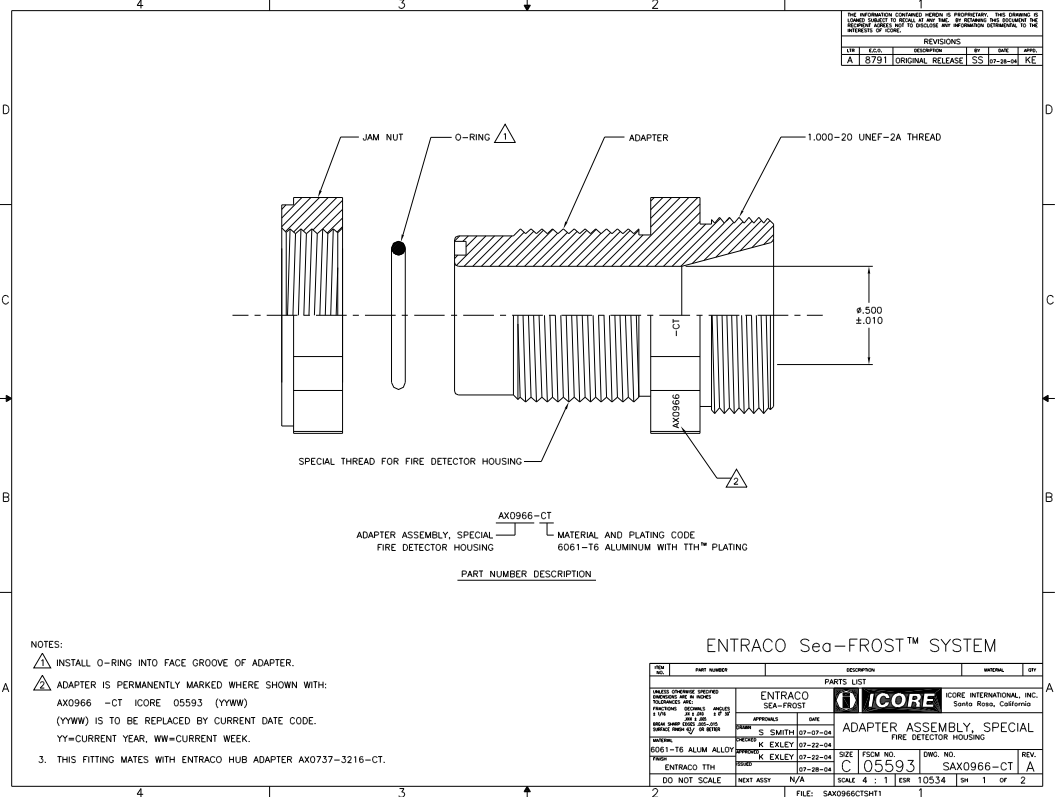


THE INFORMATION CONTAINED HEREIN IS PROPRIETARY AND UNCLASSIFIED. IT IS SUBJECT TO EXPORT CONTROL REGULATIONS. IT IS THE POLICY OF ICORE TO PROTECT THIS INFORMATION TO THE MAXIMUM EXTENT PERMITTED BY LAW.				
REVISIONS				
REV	ECO	DESCRIPTION	DATE	BY
A	1	ORIGINAL RELEASE	SS 07-28-04	KE



- NOTES:
- 1. INSTALL O-RING INTO FACE GROOVE OF ADAPTER.
 - 2. ADAPTER IS PERMANENTLY MARKED WHERE SHOWN WITH:
AX0966 -CT ICORE 05593 (YYWW)
(YYWW) IS TO BE REPLACED BY CURRENT DATE CODE.
YY=CURRENT YEAR, WW=CURRENT WEEK.
 - 3. THIS FITTING MATES WITH ENTRACO HUB ADAPTER AX0737-3216-CT.

ENTRACO Sea-FROST™ SYSTEM

REV	PART NUMBER	DESCRIPTION	QUANTITY	UNIT
		PARTS LIST		
	ENTRACO SEA-FROST	ICORE INTERNATIONAL, INC. Santa Rosa, California		
	AX0966-CT	ADAPTER ASSEMBLY, SPECIAL FIRE DETECTOR HOUSING		
	ENTRACO TTH			
	DO NOT SCALE	N/A		
		FILE: SAX0966CTSH1	1	