

NOTES:
 1. PERFORMANCE OF THIS SPLICE IS ONLY GUARANTEED WHEN USED WITH ICORE CC249 OR CC261 EMP CONDUIT.
 2. THIS HEX IS EQUAL TO THE LARGEST OF THE TWO SHIELD TERMINATION NUT WRENCH FLATS (THE LARGER OF G1 OR G2).

DISCLAIMER STATEMENT
 All dimensions represented on this drawing should be confirmed prior to inclusion within designs or specifications. Icore International Inc. is constantly incorporating product improvements, and therefore reserves the right to make changes without notice.

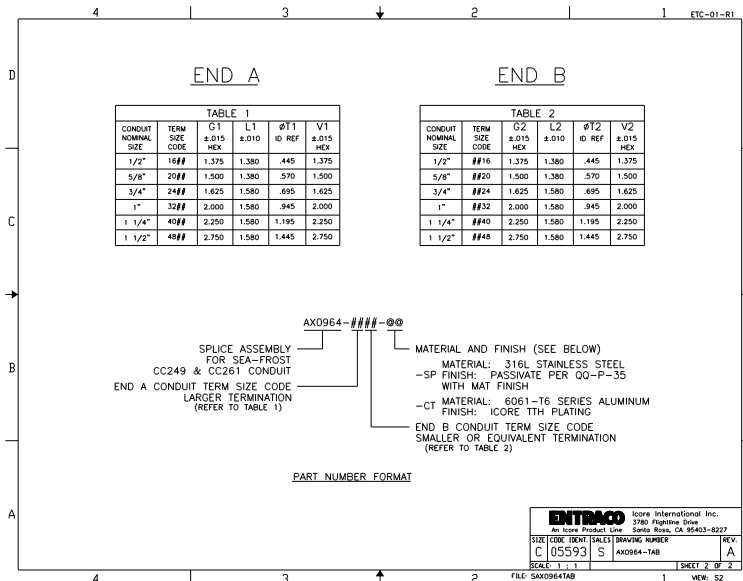
PROPRIETARY DATA
 The data described and illustrated in this document, except those items which are vendor parts, has been developed by, and is the property of, Icore International Inc. Disclosure, use, reproduction or manufacture of its contents, or any part, feature, design, function, or process shall not be made unless written consent thereto is granted by Icore International Inc.

ENTRACO An Icore Product Line	Icore International Inc. 3780 Fajfina Drive Santa Rosa, CA 95403-8227
APPROVALS	DATE
DESIGNER: S. SMITH	06/03/04
CHECKER: S. CALY	06/11/04
DRAWN: S. CALY	06/11/04

SPLICE ASSEMBLY FOR SEA-FROST CONDUIT

SIZE	CODE	TRCH	SCALE	DRAWING NUMBER	REV.
C	05593	S		AX0964-148	A

FILE: SAX0964TAB SHEET 1 OF 2 VDW: S1



ENTRACO An Icore Product Line	Icore International Inc. 3780 Fajfina Drive Santa Rosa, CA 95403-8227				
SIZE	CODE	TRCH	SCALE	DRAWING NUMBER	REV.
C	05593	S		AX0964-148	A

FILE: SAX0964TAB SHEET 2 OF 2 VDW: S2