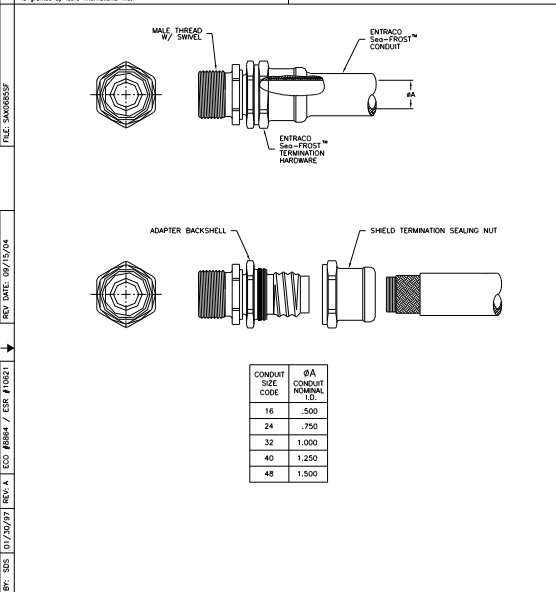


**DISCLAIMER:** The data described and illustrated in this document, except those items which are vendor parts, has been developed by, and is the property of, Icore International Inc. Disclosure, use, reproduction or manufacture of its contents, or any part, feature, design, function, or process shall not be made unless written consent thereto is granted by Icore International Inc.

**COLLAPSE STATEMENT:** All dimensions represented on this drawing should be confirmed prior to inclusion within designs or specifications. Icore International Inc. is constantly incorporating product improvements, and therefore reserves the right to make changes without notice.



**NOTES: UNLESS OTHERWISE SPECIFIED**

1. THE ENTRACO ANKERS SEA FROST FITTING COUPLES MIL-S-24235/9 THROUGH MIL-S-24235/17 STUFFING TUBES TO ENTRACO CC249 OR CC261 EMP CONDUIT.
2. ANY COMBINATION OF CONDUIT AND STUFFING TUBE SIZES MAY BE ORDERED BY IDENTIFYING THE APPROPRIATE CONDUIT SIZE AND STUFFING TUBE SIZE IN THE PART NUMBER CONFIGURATION.
3. THE ENTRACO Sea-FROST™ SYSTEM EXCEEDS THE TOPSIDE REQUIREMENTS OF THE U.S. NAVY ANKS TYPE 100A, CC, AND LPO SURFACE SHIPS.

**ENTRACO** Icore International Inc.  
 An Icore Product Line 3750 Flightline Drive  
 Santa Rosa, CA 95403-8227

CODE IDENT: SALES 05593 S  
 DRAWING NUMBER: AX0685