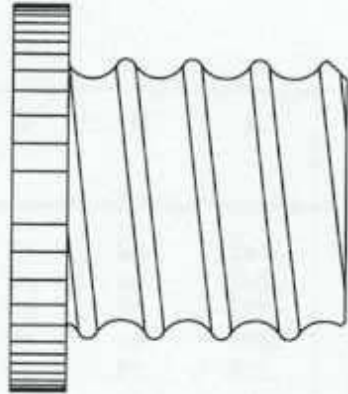
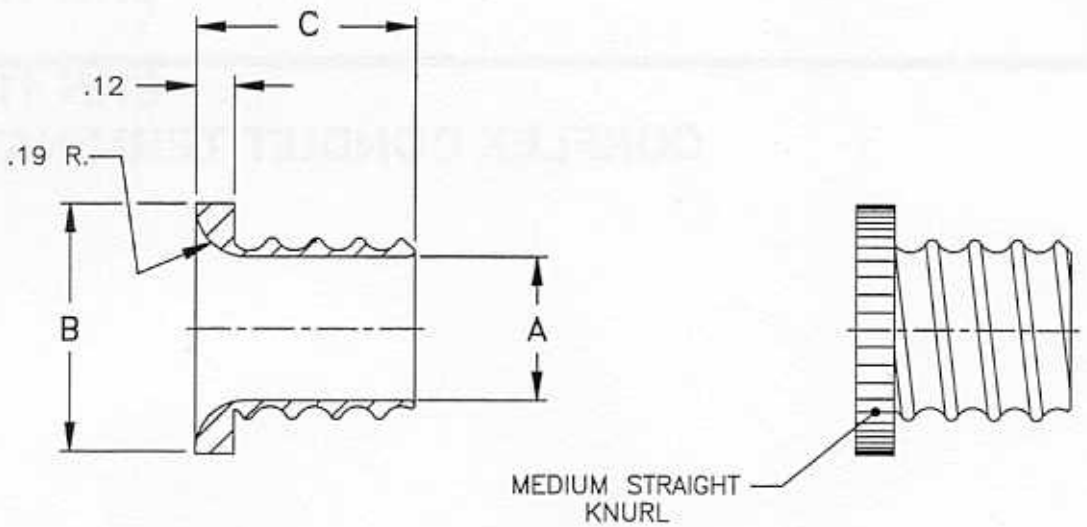

CRN 1137-*
CONFLEX CONDUIT TERMINATOR





| CUSTOMER PART NUMBER | ICORE PART NUMBER | A | B | C | FOR CONDUIT | | WEIGHT (APPROX.) WT./LBS. |
|----------------------|-------------------|-------|------|------|-------------|-----------|---------------------------|
| | | | | | I.D. NOM | SIZE CODE | |
| CRN1137-1 | CRN1137-1 | .147 | .48 | .62 | 0.187 | 06 | .001 |
| CRN1137-2 | CRN1137-2 | .241 | .60 | .62 | 0.281 | 09 | .002 |
| CRN1137-3 | CRN1137-3 | .335 | .68 | .62 | 0.375 | 12 | .002 |
| CRN1137-4 | CRN1137-4 | .460 | .80 | .69 | 0.500 | 16 | .003 |
| CRN1137-5 | CRN1137-5 | .575 | .93 | .69 | 0.625 | 20 | .004 |
| CRN1137-6 | CRN1137-6 | .700 | 1.10 | .79 | 0.750 | 24 | .006 |
| CRN1137-7 | CRN1137-7 | .940 | 1.50 | .92 | 1.000 | 32 | .010 |
| CRN1137-8 | CRN1137-8 | 1.180 | 1.75 | .92 | 1.250 | 40 | .016 |
| CRN1137-9 | CRN1137-9 | 1.440 | 2.00 | 1.12 | 1.500 | 48 | .020 |
| CRN1137-10 | CRN1137-10 | 1.680 | 2.25 | 1.12 | 1.750 | 56 | .023 |
| CRN1137-11 | CRN1137-11 | 1.920 | 2.50 | 1.12 | 2.000 | 64 | .027 |
| CRN1137-12 | CRN1137-12 | 2.160 | 2.75 | 1.12 | 2.250 | 72 | .043 |
| CRN1137-13 | CRN1137-13 | 3.900 | 4.50 | 1.12 | 4.000 | 128 | .057 |

NOTES:

1. Material: Nylon 6-6, Natural